

The Damnation of Faust

# Marche Hongroise.

Ungarischer Marsch. Hungarian March.

Trombone II.

H. Berlioz.  
Aus Fauste Verdammung, Op. 24.

Allegro marcato.  
(♩ = 55) 6 6

Viol. I. 14

4

poco cresc. - mf cresc. ff ff

ff ff

5

Trombone II

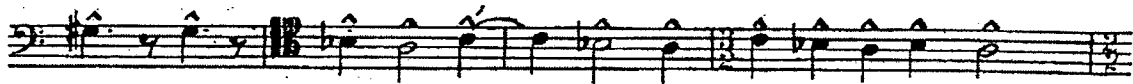
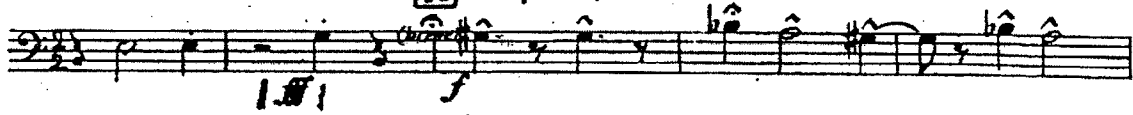
# DER WUNDERBARE MANDARIN

Aufführungsrecht vorbehalten  
Droits d'exécution réservés

Suite aus der Musik zur gleichnamigen Pantomime

Béla Bartók, op. 19

71 *sempre vivace*



*poco allarg.*



Suite-Schluss

# REQUIEM

W. A. MOZART. K. 626  
(1756-1791)

## No 2 Tuba mirum

Andante

Solo

Musical score for Tuba mirum, measures 1-28. The score is written for a tuba in B-flat major, 2/2 time, with a tempo of Andante. It features a solo performance. The notation includes various dynamics such as *f*, *fp*, and *p*, and articulation marks like accents and slurs. Measure numbers 8, 15, 27, and 28 are indicated.

## II. KYRIE

Musical score for Kyrie, measures 4-48. The score is written for a tuba in B-flat major, 2/2 time. It features a solo performance. The notation includes various dynamics such as *f* and *fp*, and articulation marks like accents and slurs. Measure numbers 4, 8, 12, 16, 20, 24, 28, 32, 36, 40, 44, and 48 are indicated. The tempo is marked as Adagio.

# PINI DI ROMA

II. Pini presso una Catacomba

TROMBONE II

*Lento*

4 3

10 3 4 11 1

(Fl.) (Tr. interna)

*p*

11 *p cresc.*

*ff*

*ff*

*ff*

*ff*

*ff cresc.* *fff*

*fff*

*stent.*

# Scheherazade

(Sinfonische Suite)

N. Rimsky Korsakow Op. 35  
1844-1908

Largo e maestoso  $\text{♩} = 48$  D Allegro molto  $\text{♩} = 144$  Molto moderato

I.u.II. *ff*  
III.u.Bla.  
*ff*

II.Solo  
*con forza ad lib. lunga*

III.u.Bla.  
*sf dim.*

Tempo di giusto

I Trpt. Solo (con sord.)  
*ad lib. lunga*

II.Solo  
*con forza lunga*

III.u.Bla.  
*mf*

Tempo di giusto Allegro molto  $\text{♩} = 144$

I Trpt. Solo (con sord.)  
*ad lib. lunga*

I.u.II. *f*

III

$\text{♩} = \text{♩}$

III  
*mf*

K *u.s.w. p subito*

# Ouverture zur Oper „Wilhelm Tell“.

Tenorposaune II.

G. Rossini.

Andante. ( $\text{♩} = 54$ )      Allegro. ( $\text{♩} = 108$ )

23 A 24      30 B 8      9      10

11      12      13      14

C

D

1

# „ALSO SPRACH ZARATHUSTRA!“

Todichtung  
(frei nach Friedr. Nietzsche)

Richard Strauß, op. 30

## II. Posaune

Sehr breit  
Contrafag

*pp* *f* *p* *cresc.* *ff* *ff*

immer breiter

1

nach, bewegt, sehr leidenschaftlich

r.v.

*ff* *ff marcatoissimo*

etwas breiter

werden

*mf* *p* *molto cresc.*

2

allmählich wieder bewegter

immer mehr steigern

*ff* *ff*

8. Die Walküre.  
The Valkyrie. La Walkyrie.

Die erste Aufführung des Werkes fand am 26. Juni 1870 in München,  
im „Ring“ am 14. August 1876 in Bayreuth statt.

Trombone II.

III. Aufzug.

I. SCENE.

Vivace.

35 36 40 41 58 59 63 64 70 71 75

*f* *ff* *pff* *ff* *ff*



Giuseppe Verdi (1813-1901)

# OTELLO (1887)

ATTO I: TEMPESTA

Allegro agitato

II *mf* *tr.* *ff*

III *mf* *tr.* *ff*

Allegro agitato *ff* *f* *ff*

*ff* *ff*

DUETTO: Otello-Jago, Finale II

Allegro sostenuto

*ff* *ff*

Allegro *f*